

HARDWARE FOR  
**HOSPITALITY**



**JARLTECH**

For resellers only

# HARDWARE FOR HOSPITALITY

The guest is the centre of attention

In no other sector is the concept of service as important as in the hospitality industry / HoReCa. Guests expect excellent and courteous service without long waiting times and products with an outstanding quality at the best price. In this brochure, you will find a selection of innovative technologies that have been developed for the diverse areas of application in the hospitality industry/HoReCa and are particularly reliable.

**Management:**  
standardised processes  
for individual wishes

As in many sectors, standardised processes are also used for the various activities in the hospitality industry. This is especially important in a varied field like hospitality, where seasonal changes in the offerings and many individual wishes of the guests often require extra effort and want to be fulfilled quickly in order to inspire. In management, everything is orchestrated. Mobile computers and tablets help to maintain an overview and to communicate quickly.

**Service:** always fast  
and friendly

In the kitchen, orders are processed quickly. Self-adhesive receipts are often issued. In the service area, employees rely on their POS systems, mobile computers and receipt printers. They take orders at the tables, let the guests pay at the counter or mobile and print out their receipts directly. Especially during the high season, everything has to go fast and therefore the technologies must be absolutely reliable!

**Purchasing of goods:**  
comply with guidelines  
and order cheaply

Food and beverage purchasing managers must comply with strict food safety guidelines. They use barcode scanners to record incoming and stored goods, and tablets and mobile computers to help with orders and returns.



## Self-service: fast service without waiting times

For some time now, more and more kiosk systems have been gaining acceptance in the hospitality industry, through which orders and payments are made by the guests themselves. For all operations, employees need reliable technology that saves them and guests time and delivers first-class results.

## We accelerate business in the hospitality industry

At Jarltech, we offer you as a reseller the product portfolio of the top manufacturers in the hospitality and HoReCa industry, plus excellent services with our premium distribution to help you move forward!





An exceptional product or service is often referred to as »exquisite« by the hospitality industry, connoisseurs and gourmets. Exquisite products served with outstanding service at a justified price – that's what Zebra offers the hospitality industry!

In no other sector is the idea of service as important as in the hospitality industry. Here, a lot of emphasis is placed on quality and details: In every shift, the staff's task is to offer guests outstanding products and excellent service in a pleasant ambience, so that no wishes remain unfulfilled. Anyone who places as much value on quality as the hospitality industry does requires a partner who stands for products that meet this high standard. Zebra mobile computers, tablets, scanners and printers inspire the hospitality industry with innovative technologies – providing more momentum and ease in daily business. With Zebra, the hospitality industry improves team communication, saves staff and guests time and streamlines processes.

Extensive support is provided to the hardware via the **Zebra DNA** evolutionary software toolkits. It optimises the devices and increases productivity.

**Zebra OneCare services** provide your customers with greater security. Get full visibility of device usage and utilisation with **Zebra VisibilityIQ services**.



Get to know additional Zebra products on our microsite!



## EC50/EC55

- Android mobile computers with Wi-Fi or optional WWAN (EC55)
- Wi-Fi combo: 2x2 MU-MIMO, WorryFree Wi-Fi and Workforce Connect PTT Express
- Optional: omni-directional 2D scanner with the SE4100 scan module



## TC21/TC26

- Android touch computers with a 5" HD touchscreen
- Various communication options such as VoWiFi, VoLTE and PTT
- 3,300 mAh standard battery, extended 6,260 mAh battery lasts up to two shifts



## TC22/TC27

- Android mobile computer with 6" FHD+ display (updateable up to Android 16)
- Two scan modules available: SE4710 or SE55 with IntelliFocus
- Wi-Fi 6/Wi-Fi 6E; TC27: 5G, 4G LTE



## TC52/TC57

- Mobile touch computers with a scratch-resistant 5" HD touch display
- SimulScan: scan 1D/2D/Digimarc barcodes and capture documents with one click
- 14 hours of battery power/Bluetooth 5.0/2 cameras



## TC73/TC78

- Android mobile computer with a 6" full HD+ touch display and 1D/2D scanner
- IP65-/IP68-certified, impact-resistant from 3.05 m
- USB-C, 5G, Wi-Fi 6E and Bluetooth 5.2; eSIM and Nano-SIM (TC78)



## ET40/ET45

- Business tablets with an 8" or 10" multi-touch display
- Integrated enterprise scanner (SE4100, SE4710 or SE55 with IntelliFocus)
- IP65, MIL-STD-810H, suited for indoor and outdoor use



## ET51/ET56

- Robust enterprise tablets for office and field use
- Available with an 8.4" or 10.1" multi-touch display
- Intel quad-core processor with 1.6 GHz, 4 GB RAM, 64 GB eMMC



## CC600/CC6000

- Kiosk systems with an integrated self-service function
- 5" (CC600) or 10.1" PCAP multi-touch display (CC6000)
- Integrated 1D/2D barcode scanners (CC600: SE2100, CC6000: SE4710)





## WS50

- All-in-one mobile computer for the hand, back of the hand or fingers
- Omni-directional SE4770 1D/2D scanner or 13 MP camera
- 2" AMOLED touch colour display, 800 or 1,300 mAh battery



## RFD40

- UHF RFID reader with eConnex technology and tri-function trigger
- Captures more than 1,300 RFIDs and barcodes/sec.
- Compatible with the Zebra TC21/TC26 and EC50/EC55, as well as Windows PCs



## CS60

- Compact pocket scanner with an inductive charging function
- Robust one-piece design, easy to clean
- Wired and wireless versions available



## LI2208

- 1D linear imager with a single-board design for a long life cycle
- Performs 547 scans per second, also reads from displays
- Optional stand for automatic presentation operation



## DS2200 Series

- Versatile area imagers for 1D/2D barcodes
- Captures from display, loyalty cards, promotional codes, vouchers and many more
- Over 90 international keyboard layouts pre-installed



## DS4608

- Versatile scanner for 1D/2D barcodes and DPM (DS4608-DPE)
- 800 MHz microprocessor and high-resolution megapixel sensor
- Quickly switches between handheld and presentation mode



## DS8100 Series

- High-performance area imagers for 1D, 2D and Digimarc barcodes
- Captures entire A4 pages, thanks to high-resolution camera
- PowerPrecision+ battery or PowerCap capacitor



## DS9900 Series

- Hybrid imagers for precise scanning in two modes
- Scans 1D, 2D and Digimarc barcodes quickly, at up to 610 cm/sec.
- DS9908R features an integrated RFID reader





## DS9300

- Presentation imagers for 2D, OCR, DotCode and Digimarc (optional)
- 800 MHz microprocessor with PRZM technology
- Optional deactivation of EAS anti-theft labels



## DS457

- Intuitive scanning module for 1D and 2D barcodes and direct part marks
- Strong reading properties, also from displays and monitors
- Omni-directional scanning in presentation and handheld mode



## ZD200 Series

- Desktop thermal transfer or direct thermal printer
- Max. print speed: 152 mm/sec. at 203 dpi
- High stability due to double-walled construction, optional peeler and cutter



## ZD421

- Windows, Android or iOS compatible 4" desktop label printer
- Print speed: 152 mm/sec. (203 dpi) or 102 mm/sec. (300 dpi)
- 3 control buttons, 5 status LEDs, movable media sensor, cartridge version and battery accessories available



## ZD621

- Desktop label printer for sustainable quality printing
- Available in direct thermal, thermal transfer, healthcare, linerless and RFID models
- Print speed: 203 mm/sec. (203 dpi) or 152 mm/sec. (300 dpi), battery accessories available



## ZD510-HC

- Direct thermal printer for wristbands for events
- Easy to reload with hygienic wristband cartridge
- 300 dpi print quality for error-free information transfer



## ZT400 Series

- Advanced direct thermal/thermal transfer label printers
- Full-Colour 4,3"-LCD touch display
- Print speed up to 356 mm/sec.



## ZQ200 Plus Series

- Mobile receipt and label printers with 2,550 mAh battery
- Max. print speed of 60 mm/sec. at 203 dpi
- USB-C 2.0 (for charging), Bluetooth 5.0 (BLE) and passive NFC tag





## ZQ300 Plus Series

- Link-OS mobile printer for receipts and labels
- Available as a 2" or 3" model and linerless version
- Weatherproof housing with an abrasion-resistant surface



## ZQ500 Series

- Robust mobile printers for harsh environments
- Access to Zebra Print DNA tools for real-time analysis
- Max. media width: 80 mm (ZQ511) or 113 mm (ZQ521)



## ZQ610/ZQ620 Plus

- Mobile receipt and label printers, ideal for shelf and return labels
- Max. media width: 55.4 mm (ZQ610) or 79 mm (ZQ620)
- Colour display for efficient operation and analysis; linerless versions available



## ZC100 Series

- High-speed card printers featuring simple operation
- For single-sided card printing in razor-sharp 300 dpi
- Ready to use out of the box, without setup or readjustment



## ZXP Series 7

- High-volume card printers with photo-quality printing
- Batch printing up to 1,375 cards per hour (monochrome)
- Optimum durability due to lamination on both sides



## ZXP Series 9

- Thermal retransfer printing for high-quality cards in photo quality
- Full colour or monochrome printing to the edge – single- and double-sided
- Produces up to 190 full-colour cards per hour



## ZC10L

- Large-format card printer for colour or monochrome cards up to 88 x 140 mm
- Produces up to 410 cards per hour (monochrome printing)
- Edge-to-edge photo quality card printing (300 dpi)



## Zebra Intelligent Cabinets

- Intelligent cabinets with Zebra's Access Management System (ZAMS)
- Protect against equipment loss and reduce equipment damage
- Charge devices during storage





## Zebra DNA

- Consists of Mobility DNA, Scanning DataCapture DNA and Print DNA
- Enhanced functionality of mobile computers, scanners and printers
- Tools for administration, productivity, transparency, management and development



## Zebra OneCare

- Maintenance plans for service, repair and direct support from Zebra
- Includes Zebra OneCare Essential, Select, Special Value, TSS and on-site support
- Provides access to VisibilityIQ and LifeGuard for Android



## Zebra OneCare™



## Consumables

- Labels in numerous sizes, colours and formats, also wristbands, RFID tags and inlays, cards, receipt rolls
- Weather- and heat-resistant media
- Thermal transfer ribbons with top printing characteristics

## Zebra VisibilityIQ Foresight

- Cloud-based Zebra platform for data capture
- Overview of the operational status of all mobile devices by location or device model
- Optimised device availability and uptime



Zebra **VisibilityIQ™**  
Foresight **IoT**

Zebra **VisibilityIQ™**  
Foresight **Connect**

Zebra **VisibilityIQ™**  
Foresight with  
**Embedded MDM**

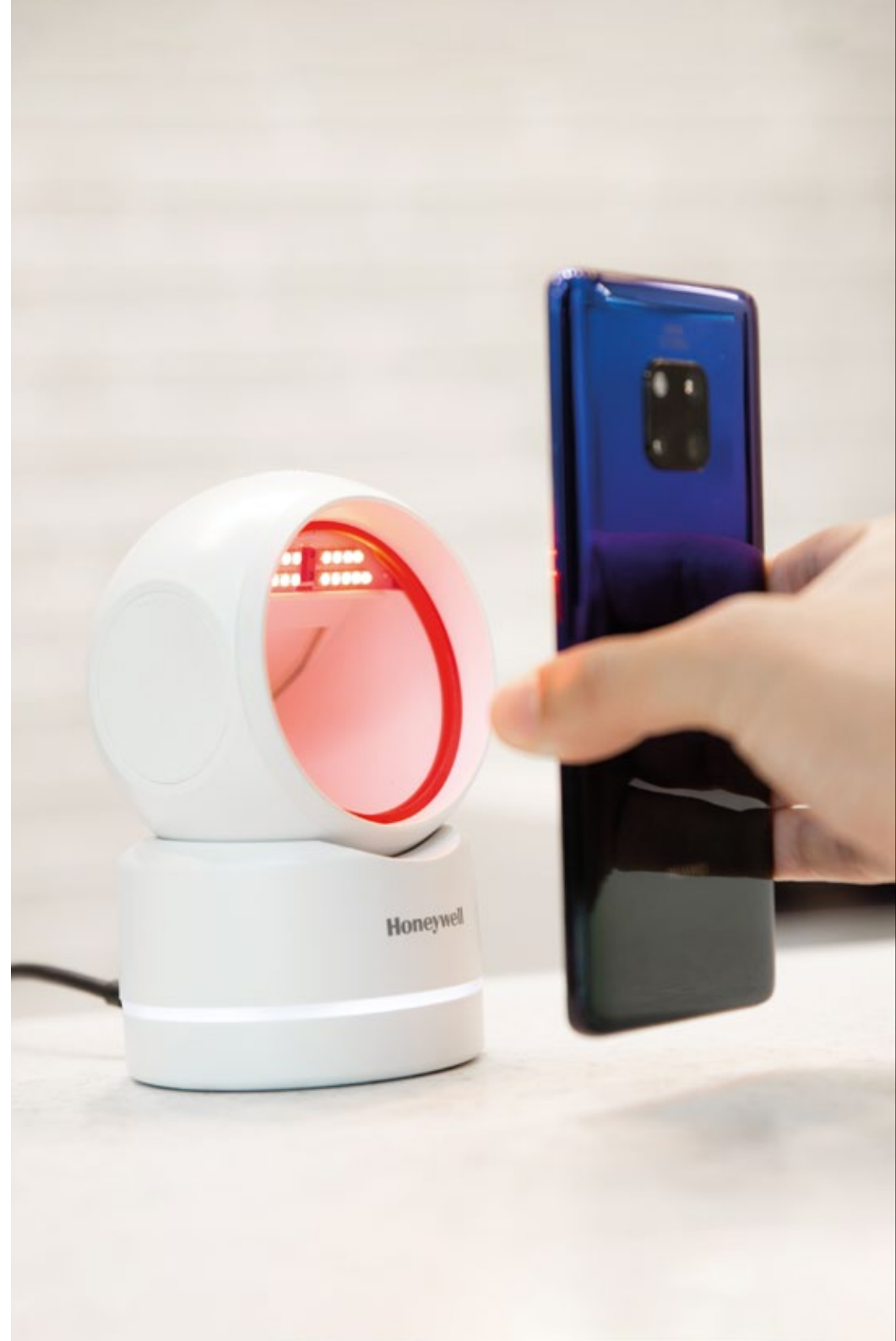


# Honeywell

The Honeywell product portfolio is one of the broadest in the AIDC industry. It has everything to offer that hospitality employees need for their daily tasks. This includes a wide range of innovative barcode scanners and flexible mobile computers.

As versatile as the product selection is, so are their possible applications: Honeywell's innovative hardware and software are used millions of times around the world in a wide variety of applications. It's no wonder: Both enhance employee productivity, ensure sustainable operation and a lower total cost of ownership.

Honeywell enhances the performance of its products with suitable software, tools and utilities and also offers attractive service packages with real added value. Honeywell hardware is complemented by suitable software and services, such as the **Honeywell Mobility Edge** hardware and software platform or **Operational Intelligence**.



Get to know additional  
Honeywell products on  
our microsite!



## ScanPal EDA10A

- Lightweight Android tablet for fast mobile data access
- 2.2 GHz Qualcomm Snapdragon octa-core processor
- Wi-Fi 6, 2x2 MU-MIMO, Bluetooth 5.1 (BLE), USB-C 3.0 and NFC



## CT30 XP

- Universal Android mobile computer (Android 13 guaranteed, 14 and 15 are supported subject to feasibility)
- 5.5" FHD multi-touch display with glove, stylus and rain modes, Flex-Range scan engine
- Supports Honeywell Operational Intelligence and Smart Pay



## ScanPal EDA5S

- Ergonomic enterprise-class Android mobile computer
- 5.45" HD touch display, 3,060 mAh battery with fast charge 3.0
- NFC, Wi-Fi 5, Bluetooth 5.0 and 4G LTE



## ScanPal EDA51K

- Affordable, robust Android mobile computer
- Powerful 4,000 mAh battery (up to 12 hours of operating time)
- Honeywell N6703 scan engine



## IH45

- UHF RFID reader (standard reading range of up to 6 m)
- Compatible with: CT30 XP, CT40/XP, CT45/XP, CT60/XP, EDA51/K, EDA52, EDA56
- Support for EPC Gen2 Rain enhances reading performance



## CW45

- Portable Android computer with bright, full HD display
- Mobility Edge, Android OS 12 to 15 compatibility
- For picking, material handling and assembly



## PC45

- Desktop label printer (direct thermal/thermal transfer)
- Wi-Fi 6, Bluetooth 5.2, Highspeed USB 2.0, USB Host 2.0, optional RS-232
- Uses Honeywell Operational Intelligence and Printer Edge



## Genesis XP 7680g

- Compact POS presentation scanner with XP scanning technology
- 1-megapixel imager, fast Snapdragon 801 quad-core processor
- Tri-colour 360° LED ring



**Honeywell**





## Orbit HF680

- 2D area scanner for demanding POS applications
- Modern and ergonomic design
- Plug & Play function via USB



## Voyager XP 1470g/1472g

- Long-lasting 2D scanners with a cord (1470g) or without (1472g)
- Also scans hard-to-reach, damaged and hard-to-read barcodes
- Backward compatible with already existing Voyager accessories



## Xenon XP 195Xg

- 1D/2D scanner with Bluetooth (Xenon 1952g) or cord (Xenon 1950g), with battery and battery-free options available
- Also captures Digimarc, OCR and DotCodes (depending on the configuration)
- Robust housing, withstands disinfectants



## Operational Intelligence

- Cloud-based platform for device management
- Three versions: Standard, Professional and Enterprise
- Enables identification of potential errors before they occur, as well as remote repairs, reducing device TCO



## Voyager 1350g

- Area imager with a compact, user-friendly form factor
- Captures all common 1D/2D barcodes, DataMatrix and DotCodes
- Supports Honeywell EZ Config, OPOS/JPOS drivers, POSNET4, SMU and plug-ins



## Consumables

- Durable media for all Honeywell printers
- Thermal labels, receipt rolls, print heads and more
- Lifetime print head warranty with Honeywell media

## Mobility Edge

Honeywell Mobility Edge is a unified hardware and software platform for many Honeywell mobile computers. It offers the longest lifecycle in the industry by supporting multiple generations of Android upgrades with security patches past typical Google support. This allows long-term projects to be developed and implemented with great technical and economic efficiency.



## Smart Talk

- Unified communications for your mobile worker
- Smart communications for any device, any OS, anywhere
- Easy to implement and maintain, intuitive to use





Datalogic is a global leader in automatic data capture and process automation and is considered a scanner pioneer. The vendor offers a comprehensive product portfolio of barcode readers and mobile terminals in an outstanding design. The high-quality hardware is robust and meets the highest demands for flexibility and performance.

Datalogic was founded in 1972 by Romano Volta and started with the production of optical sensors for automation. Thus, Datalogic was one of the first to start developing barcode readers at the end of the 1970s and became one of the European market leaders in this field. Since then, Datalogic has been known for its high manufacturing quality and product design, especially in industry, logistics and retail.

Datalogic enhances process efficiency and quality with its unique portfolio of products that provide intelligent, interconnected devices for protection, identification, recognition, verification and marking. It's no wonder then that Datalogic's broad portfolio meets application needs throughout the supply chain. From touch readers and high-performance imagers to mobile and robust handheld terminals, there's everything hospitality users need to meet daily work challenges.



Get to know additional  
Datalogic products on  
our microsite!



## Magellan 1500i

- High-performance presentation scanner for 1D, 2D and optional Digimarc barcodes
- Footprint of only 6 × 7.5 × 10.6 cm (fixed riser)
- Datalogic »Green Spot«, Motionix technology, status LED



## RIDA DBT6400

- Bluetooth mini scanner for 1D/2D barcodes
- Compatible with Android, iOS and Windows mobile devices
- Batch mode stores up to 2,000 barcodes when disconnected



## Gryphon 4500 Series

- Robust barcode scanner for 1D, 2D and optionally also Digimarc barcodes
- High-resolution megapixel sensor
- Motion sensor with Datalogic Motionix technology



## Datalogic Shield

Datalogic is also known for its software Datalogic Shield. It protects companies' Android mobile computers with regular security updates. It also offers lifecycle support and two years of additional support after EOL. This includes regular firmware updates, quarterly security updates and full Android version and OS updates, as well as the repair of bugs.



## QuickScan 2500 Series

- Omni-directional 2D handheld scanners
- »Green Spot« & Motionix motion technology
- Models: QD2500, QW2500, QM2500 (wireless) and QBT2500 (Bluetooth)



## Memor K

- Versatile Android mobile computer
- Integrated 2D scanner, 3,800 mAh battery, 2 GHz octa-core processor
- 4" WVGA touch display and backlit rubber keyboard



## Memor 11

- Android mobile computer (upgrades up to Android 14+)
- Ultra-slim 2D imager for scanning in dark environments
- SafeSwap battery with contactless charging function



## EASEOFCARE

Datalogic also offers comprehensive post-sales services for its innovative hardware devices: The EASEOFCARE (EoC) service extends the life cycle of the devices and enhances productivity in the company. To ensure that your customers always receive the right support for their needs, the service offerings are divided into three support areas.





Epson is the world's leading manufacturer of high-quality POS printers. With its broad range of POS and label printers, as well as various fiscal products, the company covers many different areas of everyday printer needs.

Epson's printer portfolio ranges from compact mobile printers, PC-POS and mPOS printers to high-performance specialty printers, as well as models suitable for single-colour or multi-colour printing of receipts, coupons, shelf and product labels and much more. In addition to the renowned durability and reliability of its thermal receipt printer models, the POS market leader boasts innovative paper-saving features and high-contrast printing in black and white or greyscale. No wonder then that Epson has a market share of approximately 42 percent for thermal printers in Europe (source: IDC April 2022).

The stylishly Epson compact mPOS solutions print driverlessly from web-based applications and even have all-in-one POS printing solutions with integrated tablet stands. They are compatible with many current tablet PCs/mobile phones and offer comprehensive connectivity options for all IT infrastructures. They score points with innovative new features such as »Network Tethering« function, which enables the wired network connection of the network connection of the printer via the charging and synchronisation cable for the tablet, and the »Tablet Sync and Charge« function – which enables printing and power supply of a connected tablet PC or Apple device via a single cable.

#### **No. 1 POS printer manufacturer**

Epson is the No. 1 for receipt printers in Europe. Source: IDC, POS Printer Market Appraisal Western Europe CY 2022 (2022 shipments), published in May 2023.



Get to know additional Epson products on our microsite!







## TM-m30III

- mPOS receipt printer with a clear design and full & partial cuts
- USB-C power & data; optional: Bluetooth and WLAN
- De-curling function, anti-bacterial housing coating, splash-proof according to IP2x



## TM-m30II-S

- All-in-one mPOS printer with a tablet holder
- Manages peripheral devices, such as barcode scanners, keyboards and scales
- Possibility of attaching a customer-facing second display, tablet sync and charge + network tethering



## TM-m30II-SL

- All-in-one mPOS printer with a tablet holder (prize winner of the »iF DESIGN AWARD«)
- Control of peripheral devices such as scanners, keyboards and scales
- »Sync and Charge«: power/data supply of the tablet via 1 cable, installation optionally horizontal, vertical or hanging



## TM-T88VII

- 80 mm High-speed receipt printer, max. 500 mm/sec. fast at 180 dpi
- Life cycle of 200 km print length and 3 million cuts
- Low power consumption, paper saving functions, suitable for phenol-free paper



## TM-P20II

- Robust, mobile thermal receipt printer for 2" media (58 mm) in a compact design
- USB-C, Bluetooth 5.0 (classic & BLE), Wi-Fi 5, Wi-Fi Direct
- Direct connection with up to 8 devices is possible



## TM-P80II AC

- Robust, mobile thermal receipt printer for 3" media (80 mm)
- Auto-cutter, wireless Qi function, de-curling
- IP54 protection against dust and water



## ColorWorks C4000

- On-demand colour label printer for takeaway, canned food and deli labels
- Control from Windows, iOS and Android via native SDK
- 2.7" LCD, auto cutter, optional Wi-Fi dongle



## TM-L100

- Label printer for linerless semi-permanent liner-free receipts and delivery notes or for printing on pre-cut, also more adhesive labels
- Easy to clean surface with silicone lamination
- Take-up sensor for automatic continuation of printing after paper removal



# BIXOLON®

BIXOLON is a worldwide manufacturer of future-oriented POS, receipt, label and mobile printers and a market leader in the global market for specialised printers. The company develops and manufactures its entire product range in-house to provide an outstanding standard at all times.

BIXOLON's headquarters and production facility are located in South Korea. However, the company also has offices in Asia, Europe, Middle East, Mexico and the USA with an extensive international network of distributors and resellers.

All products stand for high quality workmanship and reliability. For breakthrough innovations in printing technologies, BIXOLON employs a highly skilled in-house research and development team. Every day, they work to develop state-of-the-art hardware and software solutions to suit every budget and nearly every industry, including the hospitality industry.





## SRP-Q300 Series

- Multi-functional 3" direct thermal receipt and ticket printers
- Flexible mPOS configuration options, robust steel tablet stand
- All-in-one plus interface



## SRP-275III

- 3" dot matrix printer for two-colour receipt printing
- Three interface options available
- Stand-alone and wall-mounted option



## SPP-R200IIIPLUS

- Mobile 2" receipt and label printer, max. 100 mm/sec.
- NFC and Bluetooth or WLAN connectivity
- Optional: linerless label printing, magnetic stripe reader



## SRP-350V

- POS receipt printer for 3" large media (direct thermal)
- Max. 300 mm/sec. (SRP-350V) or 270 mm/sec. fast (SRP-352V)
- Paper-saving mode, anti-jam guide, Energy Star certified



## SRP-E300

- 3" direct thermal receipt and ticket printer
- Auto-cutter, 64 Mbit SDRAM and 32 Mbit flash
- Available with USB 2.0, Ethernet and Serial or as USB-only version



## SRP-330III

- 3" thermal receipt printer, max. 250 mm/sec. fast
- Optional media partition for automatic switching
- Choice of USB, Ethernet and serial or USB and parallel, serial or dual serial



## SRP-S300 Series

- Direct thermal printer for receipts and linerless labels
- Supports various media widths
- Reverse feed technology, paper saving mode, B-melodist



## XQ-840

- Android-based tablet-printer combination
- Tablet: 8" TFT LCD with multi-touch
- Printer: Max. 152 mm/sec. fast, field-installable peeler and auto-cutter



Not available in MENA.







# CITIZEN

Citizen produces a comprehensive range of printing solutions and designs its machines to meet the specific needs of each application. At the leading edge of printer design, Citizen delivers »best in class« printers that cannot be beaten for reliability, total cost of ownership and innovative design.

Citizen understands the complexities of the hospitality industry and has designed their range of printing solutions to address both front of house and kitchen needs. Specifically engineered to provide hospitality customers with versatile and fully featured printing solutions, Citizen has crafted their range to include hospitality essential functionalities such as compatibility with iOS and Android devices, anti-microbial protective technology, disinfectant ready cases, front-exit and splash proof designs and integrated LCD screens.



For more information about disinfectant-resistant Citizen printers and the self-protecting housing, please contact your sales representative!



Learn more about  
Citizen printers on our  
microsite!





## CT-E301/CT-E601

- Compact 3" direct thermal receipt printers
- Disinfectant-ready and self-protective housing, ISO 22196-certified (SIAA mark)
- Fast: up to 350 mm/sec.



## CT-E651

- Durable direct thermal POS printer with versatile options
- Print receipts and vouchers at up to 300 mm/sec.
- Sophisticated, compact design for easy handling



## CT-S751

- Thermal printer for the disinfectant-ready POS
- Front-loading/front-output mechanism for under-counter mounting
- Max. print speed: 350 mm/sec. at 203 dpi



## CT-S2000

- Thermal printer for bars, kitchens and restaurants
- Prints receipts in two colours at up to 220 mm/sec.
- Splash-proof design and variable paper widths



## CL-H300SV

- 4" desktop label printer with Energy Star certification
- Disinfectant-ready, self-protective housing (ISO 22196-certified)
- Ideal for take-away orders, labels for food deliveries, as well as price and allergy labels for fresh foods



## CT-S601IIR

- Compact printer for linerless sticky notes
- Ideal for click-and-collect applications
- Adjustable print area saves paper



## CT-S4500

- Receipt and label printer in one unit (hybrid)
- Compresses entire A4 pages onto a 4" document
- Max. print speed: 200 mm/sec. at 203 dpi



## CL-S400DT

- Direct thermal printer for labels and tickets
- Sleep mode and standby function for optimum energy efficiency
- Optional two-colour printing at up to 150 mm/sec.





A global manufacturer for over 70 years, Star Micronics supports the hospitality industry in delivering efficient, reliable solutions. At the forefront of product innovation and with a reputation for quality and reliability, Star offers an innovative portfolio of printing products, secure cash management, and customer engagement solutions.

Star's range of durable hospitality products provide the reliable service required in a fast-paced, demanding environment. Offering printing solutions and peripherals for front-of-house POS, kitchen order printing and self-service kiosks as well as accurate labelling solutions for food preparation and delivery, Star ensures a dedicated solution for any application.

Star's **CloudPRNT** technology, included with the majority of Star's receipt and label printing solutions, enables businesses to communicate directly to a restaurant, kitchen or bar printer from online food ordering platforms, web sites and apps improving order accuracy and time management.







## mC-Print2

- Ultra-compact 58 mm front exit receipt printer
- USB, LAN, iOS USB with SteadyLAN, Bluetooth, Optional Wireless LAN, Star CloudPRNT
- DeCurl function for flat receipts



## mC-Print3

- 80 mm front loading receipt printer
- USB, LAN, Bluetooth, Direct Tablet Connectivity via USB, HUB, optional WLAN
- Star CloudPRNT for online receipt and order printing



## mPOP

- Compact receipt printer/cash drawer combination
- Easy upgrade to a POS system with a tablet, barcode scanner, etc.
- Bluetooth connectivity or direct USB-C connectivity to tablets and smartphones



## TSP100IV

- 80 mm compact thermal receipt printer with internal power supply included
- Dual interface (USB/LAN) and optional wireless LAN, direct Android connectivity for tablet POS
- Star CloudPRNT for online receipt and order printing



## TSP100III

- 80 mm thermal receipt printer with internal power supply included
- USB, LAN, Bluetooth and wireless LAN models
- Thin paper capability



## TSP100IIU+

- Economical thermal 80 mm receipt printer with internal power supply included
- USB interface
- Everything included at purchase: interface and power cable, wall mount, paper guide



## TSP650II

- Fast thermal receipt printer: up to 300 mm/sec.
- Plug-in interfaces
- Optional HI X Connect interface with Star CloudPRNT



## mC-Label3

- Versatile direct thermal label printer
- Prints re-stick and permanent linerless labels, die cut labels, continuous labels and receipts on 25mm to 80mm media
- Free Cloud label design software and One-Touch-Label function



Not available in MENA.





## TSP700II

- High speed 80 mm direct thermal ticket, label and receipt printer with black mark sensor
- Plug-in interfaces, optional HI X with Star CloudPRNT
- Vertical mount for kiosk integration



## TSP800II

- 112 mm wide format direct thermal ticket, label and receipt printer with black mark sensor
- Plug-in interfaces, optional HI X with Star CloudPRNT
- Vertical mount for kiosk integration



## SP700

- Fast, 2 colour dot matrix kitchen printer
- Compact, splash resistant and easy-clean design – wall mount available
- Plug-in interfaces including HI X with Star CloudPRNT for online orders



## SM-T300i

- Robust 80 mm mobile Bluetooth receipt and label printer for iOS, Android and Windows
- Backlit LCD display with »Drop-In & Print« paper handling
- Long battery life: 31 hours



## SM-L200

- Compact 58 mm mobile printer for small labels and receipts
- Bluetooth Low Energy (BLE) allows connectivity with multiple Apple devices
- Easy to use with »Drop-In & Print« paper loading, micro USB charging and optional charging cradle



## SM-S230i

- 58 mm direct thermal mobile receipt printer
- USB, Bluetooth (SPP/MFi) and auto pairing
- LED status indicator, cover open and paper out sensor



## Cash Drawers

- Cash drawers for high volumes of cash transactions
- Robust housing, secure construction, easy handling
- Models: CD4 Series (CD4-1416/ CD4-1616) and CB2022 (CB2002 UN/ CB-2002 FN)



## mUnite Tablet Stands

- A range of kiosk stands, display holders and POS desktop stands
- Universal VESA mount, adjustable locking arms
- Tablet may be positioned in portrait or landscape format





## SM-T400i

- Robust 112 mm Bluetooth mobile receipt and label printer for iOS, Android and Windows
- Backlit LCD display, up to 35 hours of battery life
- Serial and Bluetooth 2.1 (MFi-certified for iOS/SPP)



## Sanei Series

- 58 mm, 80 mm or 112 mm printers for kiosk and self-service
- Max. print speed: 250 mm/sec.
- Optional: presenters, bezels and paper holders available



## CloudPRNT

- Offers businesses a way of communicating directly to a Star receipt, ticket, label or online order printer allowing integration of online purchasing with physical stores.
- Works with the chosen online ordering platform or e-commerce solution to store and create print jobs and communicate status with the server, eliminating the need for additional tablets for order inputting.
- For customers who prefer a managed service, Star has introduced StarPrinter.online, a dedicated service for retailers and restaurant owners to manage their printer estate.

StarPrinter.  online

Connect your Star printers  
via the Cloud



Evolis develops, produces and markets a broad range of card printers for customised plastic cards. The manufacturer also offers a variety of complementary products and services for personal and goods identification.

With the high performing Evolis card printers and the card design software, you create fully personalised, encoded and secured plastic cards for a wide range of hospitality, event and leisure applications, such as season passes, employee badges, souvenir cards, gift cards and buffet tags.

Personalisations include graphics as well as magnetic and electronic encoding (contact or contactless via RFID). In addition, Evolis offers a wide range of accessories, signature pads, consumables such as ribbons, blank cards, smart cards or RFID encoders as well as support services.

**About Evolis**

The development and production of card printers has been the core business of Evolis for more than 20 years, and the company is now the global market leader in desktop card printers. The French manufacturer has more than 380 employees and is represented worldwide in 140 countries.



Get to know additional  
Evolis products on  
our microsite!



## Zenius

- Card printer for single-sided monochrome and colour prints
- Max. print speed: up to 500 cards/hour
- Card design software cardPresso XXS Lite included



## Agilia

- Printing beyond the edge with retransfer technology
- High definition print resolution of 600 dpi
- All type of cards printable (various material + smart cards)



## Primacy 2

- High-performance card printer with and LED panel or LCD touchscreen with a QR code display
- Creates up to 280 cards/hour up to the edge at 300 dpi
- Card feeder for up to 100 or optionally 200 cards



## KC Prime

- Compact card printer for kiosk systems in self-service areas
- Single- and double-sided printing, capacity of up to 200 cards
- Magnetic stripe and smart card reader optionally available



Not available in MENA.



## Edikio Guest

- Card printer for buffet tags and cards
- For monochrome and colour labels as well as standard, credit card and long card formats
- Integrated Edikio Guest card creation software

## Evolis Red Program

The Evolis Red Program is a partner program targeted at Evolis resellers, deepening their relationship with Evolis. In addition to a high degree of customer satisfaction, it strengthens brand recognition, supports sales and marketing, and offers specific promotional offers and certified training.

**EvolisRed**  
Program





The manufacturer Colormetrics understands the importance of a feature-rich POS, but is also committed to a change in perspective: Naturally, reliable hardware is the key to long-term successful POS projects in hospitality, but the appearance of the POS plays an equally important role.

Colormetrics specialises in POS systems that are convincing in both areas. Because if you want to not only convince, but also captivate, you have to meet demands for both durable performance and outstanding visual appeal. The POS systems from Colormetrics combine technology with design and thereby ensure enthusiasm. Additionally, all Colormetrics POS systems are fanless and equipped with SSDs and therefore quiet.

For many businesses, the POS is an important piece of equipment, because it is often the first thing that catches the customer's eye. Colormetrics therefore offers anything but grey plastic monotony, but rather surprises with POS systems that capture the customer's eye and at the same time master all challenges at the highest level. As a special extra, Colormetrics POS systems are customisable in terms of colour if required, expanded with a broad range of accessory options, and even customised with the customer's own logos. The result: a point-of-sale as unique as the people who work at it and use its services.



Get to know more  
Colormetrics  
POS systems on  
our microsite!



## P5500

- All-in-one POS system with a 15.6" FHD widescreen
- Powerful CPUs: Intel Celeron 4305UE, Core i3-8145UE and Core i5-8265U
- Optional: MSR, iButton, 2D scanner, RFID, customer display (2x20, 9.7", 15.6")



## P5100

- All-in-one panel PC with an open frame 15" touch display
- Intel Celeron Elkhart Lake J6412 processor and M.2 SSD
- Optional: MSR, iButton, 2D scanner, RFID and customer display (2x20, 9.7", 15")



## C1400

- Elegant all-in-one-and-more POS system in a stand format
- Intel Core i3 or Intel Celeron N3160 processor
- Integrated direct thermal printer, max. speed of 200 mm/sec.



## P1300

- 15" all-in-one POS system with an open frame touch display
- 7<sup>th</sup> generation Intel Core i3 processor
- Optional: MSR, iButton, 2D scanner, customer display (8", 10")



## P1000

- All-in-one entry-level POS system with a 15" touch monitor
- 4 GB RAM and 128 GB SSD memory
- Silent operation, no mechanical ventilation



## PS1000

- All-in-one-and-more POS system with an integrated receipt printer
- Open frame 15" touch display, 1,024 x 768 pixels
- Touch panel IP64-certified (protected against dust and dirt)



## Colometrics Advantage Program

With the Colometrics Advantage Program (CAP), Colometrics supports professionals in the POS industry who work hard every day to make Colometrics' products better known. It includes special project pricing and project protection, an additional year of free warranty, up to 12 loaner units per year and more.

Learn more:





Diebold Nixdorf  
automates, digitises  
and transforms the  
way people shop.

For the large majority of global leading retailers, Diebold Nixdorf connects integrated systems of digital and stationary channels conveniently, securely and efficiently for millions of consumers every day. Worldwide, the company is represented in more than 130 countries with approximately 22,000 employees.

In the hospitality industry, Diebold Nixdorf is also a leader, offering a range of solutions that fit perfectly into any environment. Diebold Nixdorf's portfolio is made up of modern and flexible all-in-one POS systems and modular self-service systems. All models are characterised by high quality and a uniform, space-saving design with a lifestyle look. A wide range of connections and I/O hub options also allows the systems to be expanded with a variety of peripherals.

For excellent service, Diebold Nixdorf also supports its solutions after purchase with the desktop management agent called »BEETLEINFO«. This makes remote management and remote monitoring of the systems even more efficient. Furthermore, 5 years of product availability and 7 years for spare parts and support guarantee a high level of investment protection.



Learn more about  
Diebold Nixdorf  
products on our  
microsite!







## DN Series EASY ONE

- All-in-one system with modularly interchangeable screen sizes (15", 15.6" or 18.5")
- Ideal for self-service (fast fashion, fuel and convenience, post and QSR)
- Modular, open and sustainable, compatible with all series peripherals



## DN Series EASY eXpress

- All-in-one system with high flexibility and adaptability, based on a modern product design
- Application areas: self-checkout, attended checkout or information terminal
- Modular building block concept with future-proof component selection of components from 15" to 19" screen size



Possibly limited availability in some



## DN Series BEETLE A

- All-in-one POS solution
- Highly modular and scalable industrial design for flexible configurations
- Innovative Click & Connect system Design



## P1200

- Premium thermal receipt printer for POS, self-service and kiosk environments
- Max. print speed: 355 mm/sec. at any angle between 0° (horizontal) and 90° (vertical)
- Various status sensors, ECO paper-saving mode, fiscal expansion modules



EU countries – please ask your sales representative.



## K-two

- Compact interactive kiosk for maximised retail space
- Flexibly scalable, modular and individually adaptable
- Available in three screen sizes (22", 27" or 32")



## TH200i

- Fast POS printer: up to 200 mm/sec.
- Drivers for Windows and Linux; JavaPOS, OPOS-UDM supported
- Dual interface (USB-B/RS-232) and connection for cash drawer control





Elo is the inventor of the touchscreen and one of the world leaders in touch technology. The company manufactures and markets a comprehensive range of touchscreens, touchmonitors and touchcomputers.

Founded more than 50 years ago, Elo Touch Solutions was the first company to develop touch technology. Since then, users all over the world swear by Elo touchscreen systems with their outstanding technical features, reliable quality and easy use. Today, Elo's portfolio comprises displays ranging in size from handheld to large format 165 cm (65") in different form factors and available in various configurations, touchmonitors and powerful Android, Linux and Windows touchcomputers. Additionally, Elo offers smart solutions such as Elo Edge Connect clip-on peripherals and the EloView remote device and content management platform.

To ensure that its touchscreens, touchmonitors and touchcomputers meet the diverse, demanding requirements of different work industries, such as hospitality, Elo fine-tunes the design and functions of each of its products. From mPOS and table order to kitchen displays and digital signage, Elo has all the solutions for interactive hospitality. Comprehensive peripheral options for multi-functional solutions and particularly robust touch technologies cover a broad range of applications.



Learn more about  
Elo products on our  
microsite!



## I-Series 4

- Versatile all-in-one systems with Android 10 (GMS)
- For POS, self-service, signage and KDS
- Compatible with Elo Edge Connect accessories and Wallaby self-service stands



## Interactive Digital Signage Displays (IDS)

- Sizes from 32" up to 65"
- Optional Android or Windows compute engines
- Landscape or portrait mode, table integration



## Wallaby Pro Self-Service Stands

- Self-service stands for 22"/24"/27" displays
- For wall, counter or floor mounting, single-sided or double-sided use
- Connectivity options for printers, payment terminals and peripheral devices



## M50

- Android mobile computer for table ordering and curb side pick-up
- 4,000 mAh battery, Qualcomm Quick Charge 5 charging interface
- USB-C, Bluetooth 5.0, Wi-Fi (2x2 MU-MIMO), 4G/LTE, NFC and barcode scanner



## EloPOS

- Interactive POS system with a Windows 10 operating system
- Expandable with customer display, barcode scanner, MSR, EMV and other peripherals
- 15", 15.6", 17" or 21.5" display with PCAP touch technology



## M60 Pay

- Android mobile POS system with 6" touch display
- Card insert, swipe and contactless NFC payments
- USB-C, Bluetooth 5.0, Wi-Fi, 4G/LTE, NFC, optional barcode scanner



## EloPOS Z30

- Stylish and thin all-in-one POS system with an Android operating system
- 15.6" FHD main display, optional integrated customer display
- I/O hub and integrated cable routing



## Elo Edge Connect

- Large Elo peripheral selection for more flexibility
- Barcode scanners, payment terminal holders, RFID and fingerprint readers, MSR and many more
- Combinable in any way, seamless integration

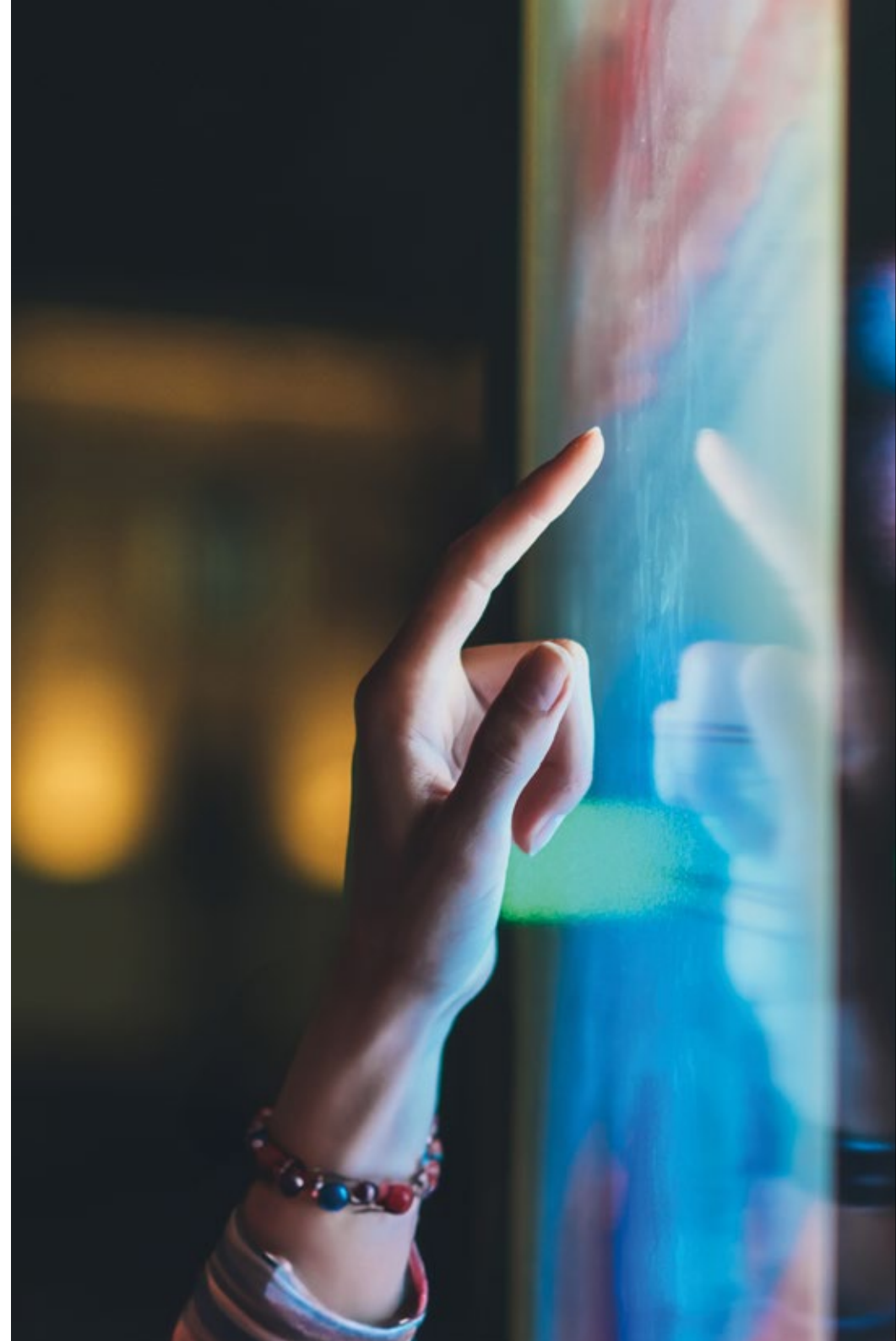




iiyama is one of the leading international manufacturers of monitors and professional displays both with and without touchscreen. The portfolio includes models with a black or white housing for the desktop, for installation and for use as an interactive service point in hospitality.

One focus of the company is the attractive price-performance ratio. True to the motto »Value for Money«, the key features for both the desktop models and the large-format (interactive) digital signage monitors are high reliability, high-quality components for brilliant image quality and precise touch operation.

Additionally, iiyama ensures that all monitors are designed for simple Plug & Play, meaning that all relevant data is stored in the monitors directly from the factory and is automatically transferred to the operating system when connected.





## TE14 Series

- Large format touchmonitors for 24/7 operation
- 4K UHD resolution, multi-touch with 50 touch points
- Display sizes: 65" (163.9 cm), 75" (189.3 cm), 86" (217.4 cm)



## TE12 Series

- Large format touchmonitors in 55", 65", 75" or 86"
- Multi-touch with 40 touch points, 1 mm touch accuracy, 4K UHD resolution
- Secure thanks to screen lock, USB password protection and Clean app



## IDS

- Large format touchmonitors up to 98" for long-term use
- Wear-free multi-touch technology with up to 20 touch points
- Maximum viewing angle and Full HD or 4K resolution



## Mountable LCDs

- Robust mountable touchmonitors from 10.1" to 65"
- Specially coated glass surface, scratch- and impact-resistant
- Optional: models with ball of the hand recognition



## UC Conference Solutions

- Ideal for medium to large meeting rooms
- UC speakers: Bluetooth speakers with 360° audio capture
- UC webcams: webcams with a large viewing angle (dFoV) and 4K UHD resolution



## TE62 Series

- All-in-one PCAP multi-touch displays
- Models from 43" to 86" available
- IPS panel technology, 4K UHD resolution, 500 nits, contrast: 1,200:1



## T15xx

- Desktop monitors with a 15" touchscreen
- Available with 5-wire touch, surface acoustic wave (SAW) or projected capacitive (PCAP)
- Operable with a stylus, finger and gloves





More than 40 years ago, apg began equipping businesses in hospitality with high-quality cash drawers. Today, the company sells SMARTtill technologies and is one of the global market leaders of cash management systems and POS peripherals.

A cash drawer from apg provides smooth, trouble-free service with virtually no downtime – for years to come. Whether it's a small kiosk or a multi-national wholesale retailer, apg knows that no business can afford disruption at the POS. That's why apg's reliable cash management systems help minimise cash loss, reduce cash handling costs, enhance in-store productivity and improve daily operations for employees.

Whether it's a customised or general-purpose cash drawer or a product for the mobile buying experience, apg emphasises security and reliability in all of its products, in line with its corporate motto »trust at every point«. Additionally, the company offers a broad range of accessory options.





## ECD Series

- Tested beyond 500,000 transactions
- Drawer status micro switch & CE-certified
- Slide out and flip lid models available



## E3000 Series

- Tested beyond 1 million transactions
- Common drawer size to suit existing furniture
- Drawer status micro switch & CE-certified



## Nano

- Tested to last beyond 1 million transactions
- Very compact high-capacity cash drawer
- Drawer status micro switch & CE-certified



## Flexi

- Compact cash drawer with diverse equipment options
- Flexible inserts – available for standing or stacked banknote compartments
- Robust steel construction with ball bearing telescope rails



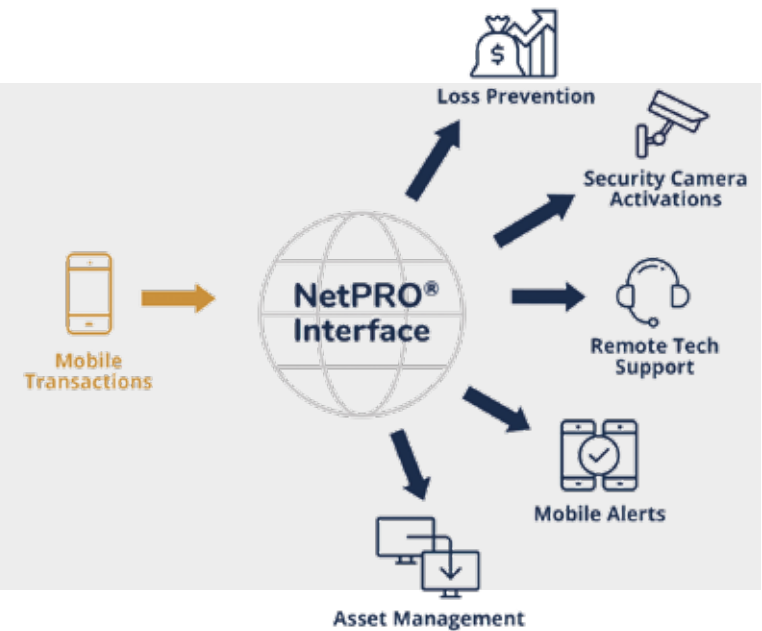
## Architect

- Clever POS cable management solution
- Supports the placement of POS peripheral devices
- Footprint: 492.12 × 415.93 × 127 mm (L × W × H)

## NetPRO

With a mobile POS, your customers shorten waiting times and save cash in the long run by intelligently networking multiple mPOS devices with the same cash drawer.

- Multiple configurations available
- Communicates with mobile POS devices
- Integrates easily and quickly into LAN and WLAN environments
- Share cash drawers across several clients in the network
- Check cash transactions and receive usage notifications in real time
- Queue management



# ANKER

THE POS COMPANY

As an owner-managed company with headquarters in Bielefeld and offices in Essen, South Africa and Indonesia, ANKER stands for the combination of long tradition, innovation and consulting at the point of sale.

As the inventor of the classic cash cassette, ANKER develops and distributes high-quality cash handling hardware – from cash drawers to poles and cash management systems to future-oriented self-checkout solutions. ANKER offers a wide range of cash handling products for the secure handling and safekeeping of cash and receipts. The merger to form the ANKER Group has covered the entire value chain at the POS and created a creative and innovative solution for customers – from digital cloud POS systems for small and medium-sized retailers to all-in-one and self-checkout systems to full-service implementations for retail groups. Together, ANKER is specifically expanding its competencies as an industry-independent total solution provider.







## Retrohousing RK10

- Customisable retro design cash register
- In combination with software, a fully-fledged cash register system
- Interchangeable design panels, available in black and white



## MDX13E

- Cash drawer with front opening and 3-position lock, all-steel construction
- 5 note compartments (horizontal) and 8 coin compartments
- Dimensions: 330 x 89 x 360 mm (W x H x D)



## MDX16

- Cash drawer with front opening and 3-position lock, all-steel construction
- 5 note compartments (horizontal), 9 coin compartments, 1 slip compartment, 1 cheque slot
- Dimensions: 417 x 100 x 417 mm (W x H x D)



## MDX18

- Cash drawer with front opening and 3-position lock, all-steel construction
- 5 note compartments (horizontal), 8 coin compartments (adjustable), 1 slip compartment, 2 cheque slots
- Dimensions: 440 x 120 x 460 mm (W x H x D)



## curve.one

- Stylish tablet holder, mobile or for the sales counter
- Compatible with all popular tablets
- Available in the colours anthracite and white glossy



## CountEasy/CountEasy TS

- Precise cash scales for counts under one minute
- Mobile useable, up to 12 hours battery life
- Optional connection to receipt printer possible



## Cash Recycler

- Banknote and coin processing terminal with 7" touch screen
- Capacity: 80 mixed banknotes (banknote recycler), 500 banknotes (collection cassette)
- Dimensions: 335 x 698 x 524 mm (W x H x D), available in black and matt white



## Self-Checkout Terminal

- Stationary, customisable self-checkout terminal available with or without cash register software
- Three variants: self-service checkout, table-top or wall-mounted including bracket
- Space-saving footprint, combination with a cash recycler possible





With the CONNECT pagers, ratiotec takes service in the catering industry to a whole new level – even when there is a shortage of staff. By automating the ordering process, they simply and effectively ensure fast and smooth processes that delight customers and staff.

ratiotec GmbH & Co. KG is a medium-sized electronics company from Essen in the heart of the Ruhr area that has been involved in the development of electronic products for 20 years. As a specialist in sensor technology, the manufacturer has been offering national and international companies from the catering, retail and healthcare sectors innovative solutions for process optimisation with the ratiotec CONNECT infrastructure since 2019.

Among other things, the CONNECT system is characterised by high range, scalability and long battery runtimes and is easy to implement in individual processes. An integration into cash register systems is also possible – for even more efficiency and convenience.

More turnover, shorter and more relaxed waiting times, more satisfied customers – use digitalisation with ratiotec CONNECT.





## CONNECT Starter-Set 10

---

- Set of 10 pagers including charging base and silicone protective covers
  - CONNECT Box
  - CONNECT Repeater
- 



## CONNECT Starter-Set 20

---

- 2x set of 10 pagers including charging base and silicone protective covers
  - CONNECT Box
  - CONNECT Repeater
- 



## CONNECT Starter-Set 30

---

- 3x set of 10 pagers including charging base and silicone protective covers
  - CONNECT Box
  - CONNECT Repeater
-

## SIMPLY CALL:



0800 52758324



800 033330



+43 1 4852605-20



0800 297971



800 033330



+43 1 4852605-20



+49 6081 600-200



80 884964



+43 1 4852605-20



0800 8766807



+46 8 52500999



+43 1 4852605-20



0800 52758324



800 789251



+43 1 4852605-20



0800 20999



+356 2132 0945



+43 1 4852605-20



0800 527583



+49 6081 600-200



+43 1 4852605-20



800 52758324



800 035702476



### Jarltech Europe GmbH

Jarltech-Platz 1 // 61250 Usingen // Germany

Phone: +49 6081 600-100 // Fax: +49 6081 600-500

europe@jarltech.com // www.jarltech.com

[hospitality.jarltech.com](http://hospitality.jarltech.com)